

mholo **hello.**
hallo **sawubona**



Welcome to Framecore! We are a dynamic construction company established in 2016 focusing on medium sized projects in the industrial, commercial, retail and hospitality sectors of Cape Town. We are a proactive, energetic and solutions driven bunch, passionate and knowledgeable in our trade.

In the next few pages, you will meet our people, see our projects and experience our culture.





THE FELIX

Rejix

HAPPY HIPPO

Introduction

Framecore was established in 2016 with a vision to become a niche construction company and main contractor in Cape Town, Western Cape. Its founders have a strong understanding of the holistic construction supply chain having gained first-hand experience in all aspects of delivering complex construction projects across all industry sectors.



2016

We are known for our ability to get involved in projects upfront during the planning stages to assist the project team in developing practical and feasible solutions for an efficient and smooth delivery.

Our Clients

We have more than 31 unique clients and counting, which range from listed corporations to private individuals. We are always excited to meet new potential clients and partners for a new undertaking!

31





Leadership

Between our 3 directors, we have more than a 81 years of experience in the construction industry, which spans from Johannesburg, Namibia, Botswana, Durban but predominantly the Western Cape. We call Cape Town home :)

81



Dale Gay
Founder and Director

Diploma in Construction Management (WP Technical College)



Johan Bezuidenhout
Founder and Director

Hons. Construction Management, Msc. Property Studies, M.B.A (UCT)



Pat Britz
Founder and Director

BSC Quantity Surveying (UP)

We have diverse backgrounds and skills developed over the last 30 years. These skills have been refined in our ability to lead teams on all fronts of construction management and project delivery.



Robert Barratt
Operations Manager

BSC CEM, Hons.
Construction Management
(UCT)

R3.5bil



Adrian Hammond
Commercial Manager

National Diploma in Building,
B Tech Quantity Surveying
(CPUT)

Our leaders have been involved in big and small projects over the years, totalling more than R3.5 billion between them. Our strategic focus for projects in Framecore and Framecore Ubambiswano range ideally between R5 mil. and R50 mil in value with spans of 3 to 12 months to deliver. We are of course always evolving and keen for a challenge!



FRAMECORE
CONSTRUCTION



FRAMECORE
UBAMBISWANO

Affiliations & Associations

09



Framecore (Pty) Ltd is a registered member of the National Home Builders Registration Council (NHBRC), the Master Builder's Association of the Western Cape (MBA), The Federated Employers Mutual Assurance Company (FEM), The Building Industry Bargaining Council of Cape Town (BIBC) and Framecore Ubambiswano (Pty) Ltd is a Level 2 BEE Contributor.



Staff 36

Our staff compliment consists of more than 36 salary and wage personnel ranging between office based and site based staff. Adrian Hammond and Jaco Esterhuyse head up our office staff, while Rob Barratt and Dale Gay head up the site staff.

Since our inception in 2016, the Framecore team is the culmination of many years of building relationships, cultivating trust and doing the hard yards together. Every individual has a unique role and place in the company to keep things going in the right direction. We take pride in our team's ability to shoot the lights out.



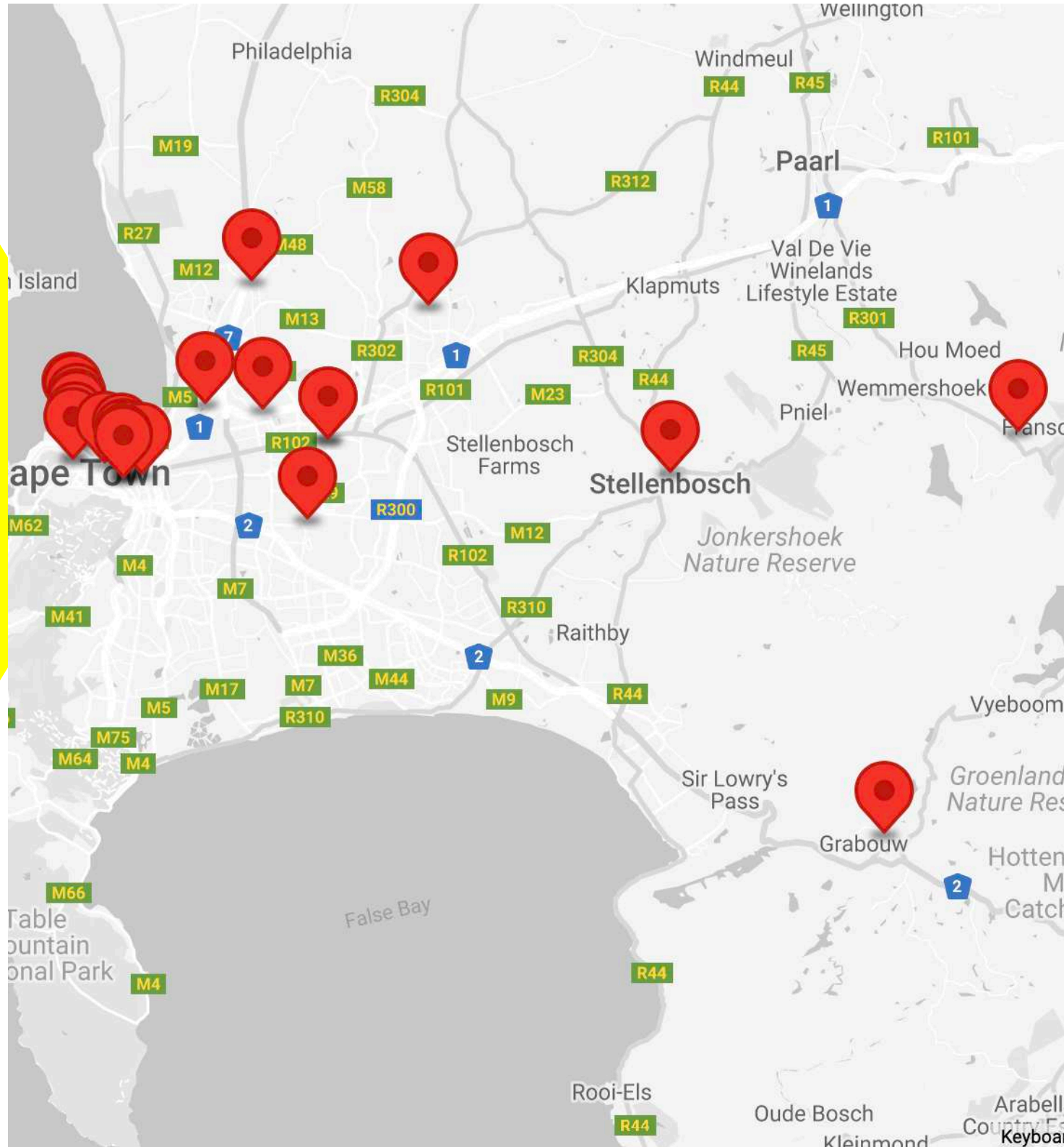


Projects

Our pride and joy is our projects. We have delivered more than 64 projects and counting for clients in the Cape Town area over all industry sectors.

64

We have experience in commercial, industrial, retail and hospitality projects. Our ability to deliver projects not only traditionally procured, but also Design-Build, Negotiated and on a Turnkey basis is what sets us apart from the competition.







Hospitality

08

- ABC Apartments Phase 1 – R13 Mil.
- ABC Apartments Phase 2 – R6 Mil.
- Lord Charles Hotel Refurbishment – R20 Mil
- The Digs Student Accommodation – R19 Mil.
- FFSA Pool House – R3 Mil.
- FSSA Farmhouse – R5 Mil.
- Franschoek Apartments – R6 Mil.
- V&A Hotel 3rd Floor – R7 Mil.
- V&A Hotel Mockup – R0.5 Mil.

09

Alterations

- World Mission Society – R6 Mil.
- We Think Code – R5 Mil.
- Cecil Road – R3 Mil.
- Brickfields Road Brickworks – R32 Mil.
- Pro Golf Shop – R11 Mil.
- Zeitz Mocaa Museum – R2 Mil.
- PDC Momentum Bathrooms – R4 Mil.
- Hoi Ploy Showroom – R9 Mil.
- Knowledge Park – R5 Mil.





BRICKFIELDS RD

FRIEND ST

E DECKLE
EDGE

F&T
hobby trim





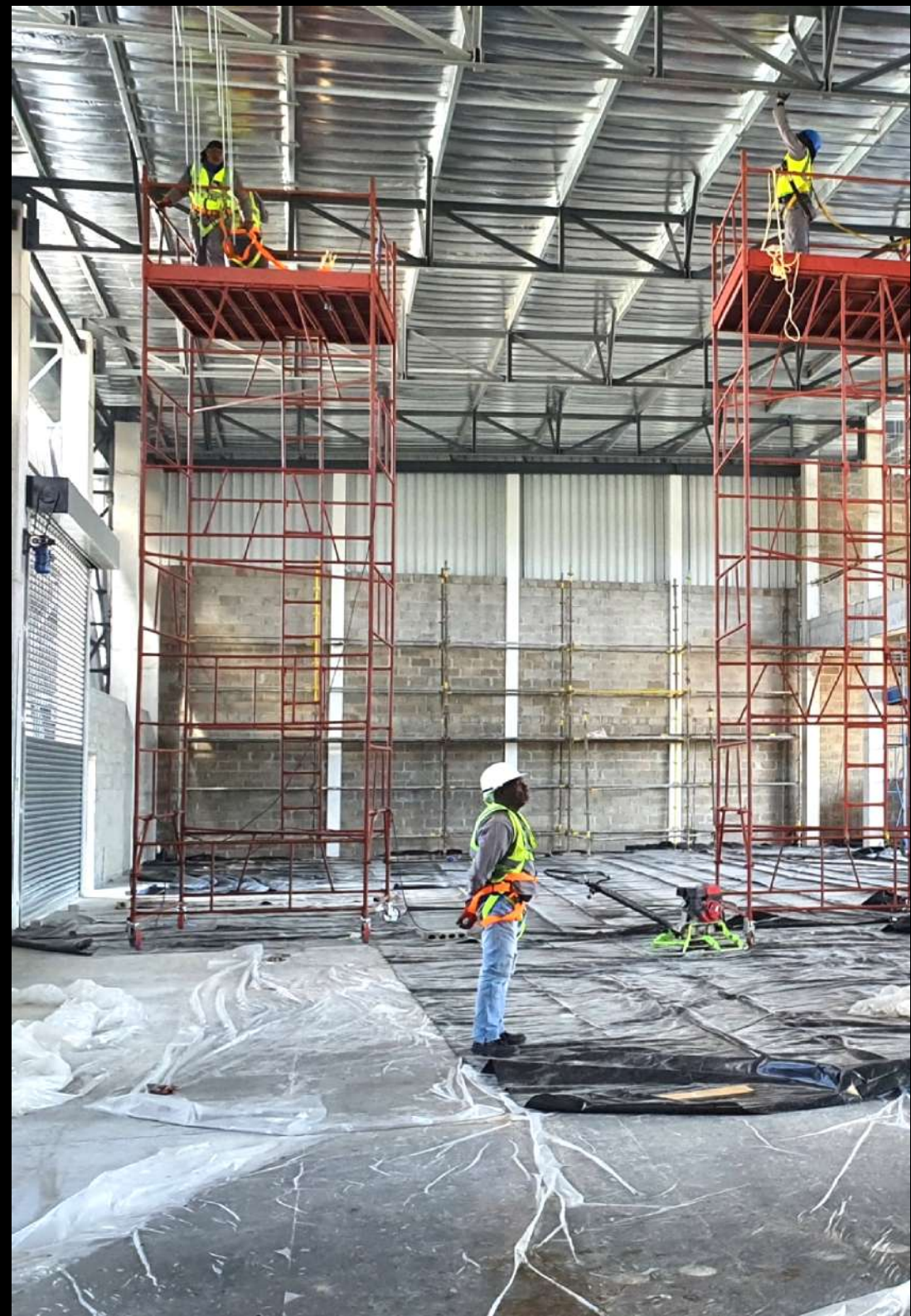
Commercial 10

- Joshua Generation Church – R23 Mil.
- Grabouw Shopping Centre – R32 Mil.
- Belhar Shopping Centre – R9 Mil.
- Cavendish EGG – R2.5 Mil
- Brickfields Road Parkade – R25 Mil.
- The Felix 11th Floor – R2.5 Mil.
- Kenilworth Centre Additions – R0.5 Mil.
- Franschoek Commercial – R8 Mil.
- Brickworks Base Build – R21 Mil.
- Scatec Solar Fitout – R3 Mil.

08

Industrial

- Zibo Plastics - R36 Mil.
- Stonewood 1 Units – R12 Mil.
- Stonewood 2 Showroom – R9 Mil.
- Stonewood 3 Units and Showroom – R14 Mil.
- Fedex Cargo – R12 Mil.
- Atlantic Hills Units – R19 Mil.
- Container World – R25 Mil.
- Bidvest Warehouse Extension – R3 Mil.





Speciality

08

- Black River Park Courtyard – R11 Mil.
- BRP Warehouse Conversion – R5 Mil.
- V&A Wheel of Excellence – R4 Mil.
- PDC Momentum Roofing – R8 Mil.
- The Fairways Camps Bay – R5 Mil.
- 15 on Orange Spa – R3 Mil.
- Bentley, Porsche and Lamborghini – R4 Mil.
- The Felix Facades – R5 Mil.

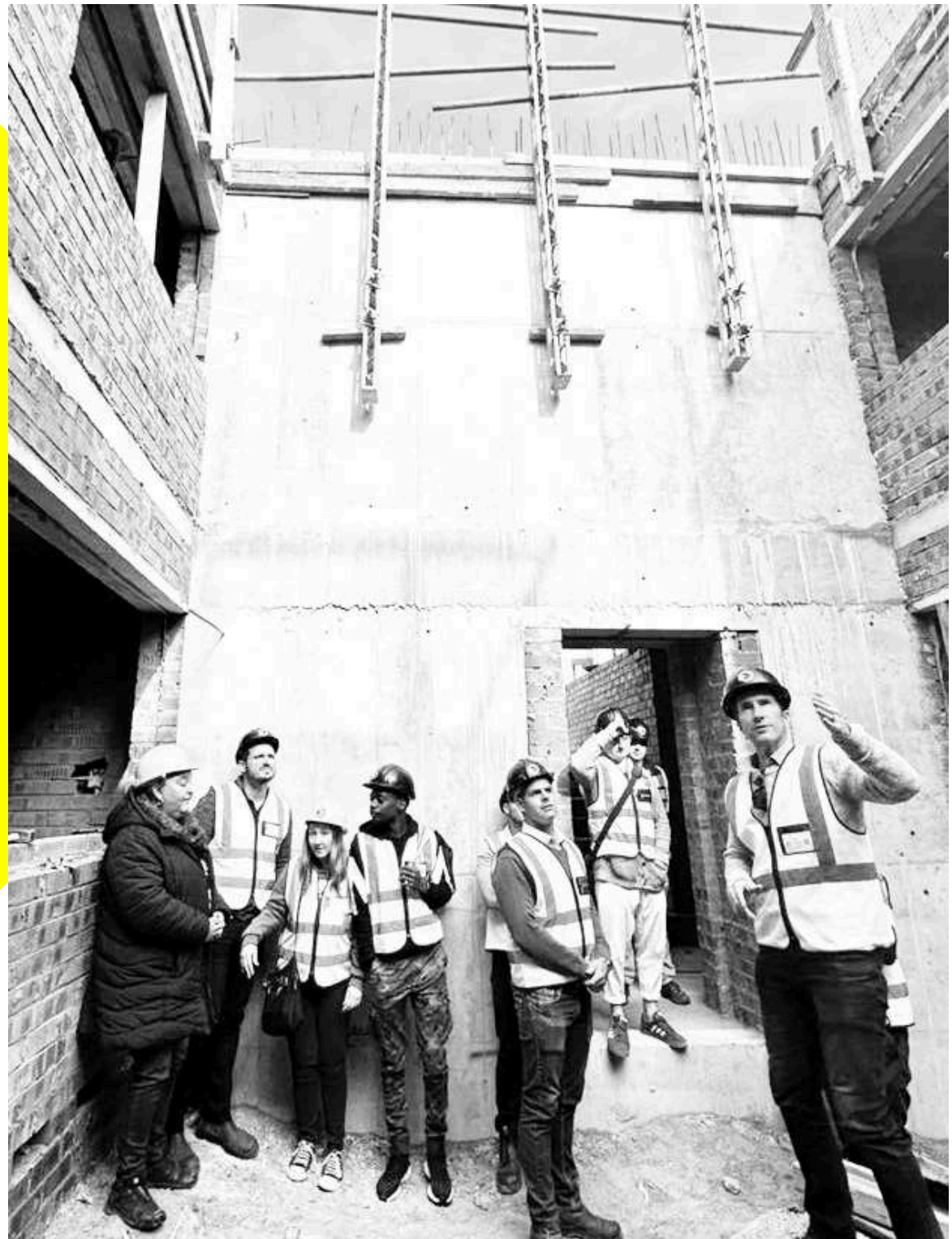


Initiatives

Student Program

Framecore has since our inception taken a keen interest in engaging with and taking on students from institutions such as the False Bay College and Cape Peninsula University of Technology as interns with the aim of showing these students the ropes on construction sites and ultimately offer the opportunity of employment to those with exceptional promise. Once a month a construction short course is presented by our directors or senior managers covering a relevant topic such as H&S, Programming, Claims, Technical Skills amongst others.

12





Dog Kennel Donations 15

In 2022 Framecore undertook to donate a dog kennel for each project undertaken and gave our professional team the same opportunity. RLB, Igual, MLC, WAUW Architects and Safe Working Practice are some who donated with Framecore. A total of 15 kennels have been donated to date.

The Dog Kennel Initiative that was started in 2022 was done in collaboration with R.A.D (Rescued Animal Drive), a non-profit organisation focussed on helping abandoned or homeless dogs and other animals find a home.



Contact

5

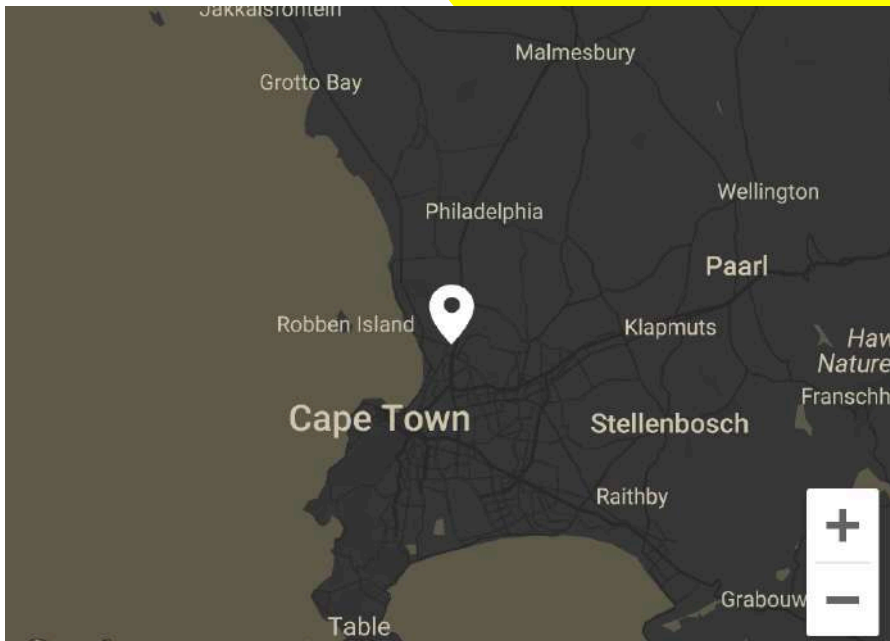
Imola Close, Unit No. 2

Killarney Gardens, 7441

T: 021 180 1653

M: info@framecore.co.za

Our operating hours are from 7:30 to 16:30 Mondays to Fridays. As a general rule, we are not open on weekends and public holidays.



Get hold of us by giving Celeste or Janice a call on 021 180 1653 at our office situated in Imola Close, Killarney Gardens. You can also make contact by sending an email to info@framecore.co.za or by visiting our social media pages. See you soon!



